



FUSION™ by WET®



INSTALLATION INSTRUCTIONS
version FREE STANDING

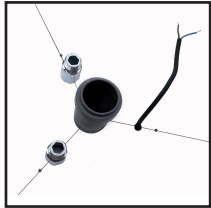
WET®

Via Altipiano 11, 21010 Porto Valtravaglia (VA) Lago Maggiore - ITALIA
tel. + 39 0332 547728 mob. + 39 3479603022 | www.wet.co.it - info@wet.co.it
WET srl - P.IVA = CF 03031780129



Floor Fixing and Preinstallation supply and waste **FUSION by WET®**

EN



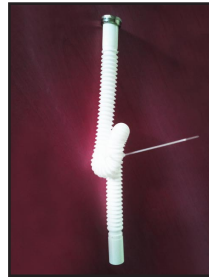
PRE-INSTALLATION
Central waste
Lateral water supply
HOT + COLD
Lateral electric supply
(maximum 350mA)

1



Make sure all connections
fit inside the floor RING
Ø 130mm

2



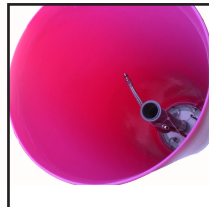
Take the AC 3 syphon
and bend it.
Then fix it into a permanent
syphon and connect them.

5



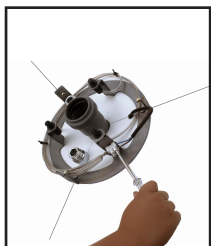
Fix the floor RING properly
onto the floor

3



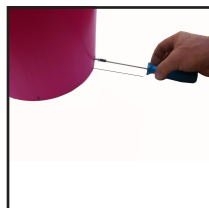
Make sure that the tubes don't
make shadows, and NEVER
Touch the lamps.
All tubing must pass the glow
wire test of 650°C

6



Connect the circuit.
The transformer has to be
mounted at appropriate
protection IPX5 / 60 Newton
see your country regulations

4



Fix FUSION column to the
floor RING

7

WET®

Via Altipiano 11, 21010 Porto Valtravaglia (VA) Lago Maggiore - ITALIA
tel. + 39 0332 547728 mob. + 39 3479603022 | www.wet.co.it - info@wet.co.it
WET srl - P.IVA = CF 03031780129



Tap Fixing SIDE TAP AC6 by WET®



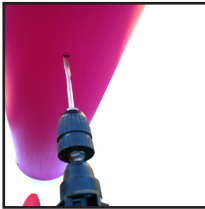
Mark the height of the SIDE TAP at 60 cm from the floor.

1



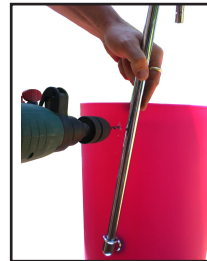
Mark a second height at 80 cm from the floor.

6



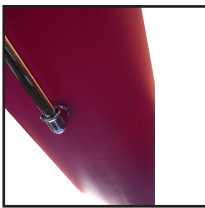
Drill \varnothing 22 mm hole.

2



Drill \varnothing 3 mm hole.

7



Fix the faucet AC6 in the hole.

3



Fix the AC6 RING (by pressing)

8



4



9



5



10



Side - Faucet Fixing - Base and Column Connection SIDE FAUCET FCT by WET®



Mark height at 80cm from the floor

1



Drill \varnothing 32mm hole

2



Fix the side - faucet

3



Assemble the handle

4



Connect the tubing

5



Click the basin into the column

6



7

Installation Possibilities

FUSION by WET®



The security of the product can only be guaranteed when installation is done following this instructions. Installation has to be done by only qualified installers: both electrician and plumber, and according the established security and safety - rules of the country of installation for eventual future consultancies.

A damaged appliance or cable cannot be replaced. In that case the light appliance has to be destroyed.

All LIGHT by WET® appliances use 350mA (maximum)

Protection of the wiring:
Make sure that the electricity - line coming in has a proper **CIRCUIT BREAKER** protection, just as established by the safety and security rules at force in the country of installation, and respect also all other indications in force, in the country of installation.

FUSION is designed so that both drain/waste and water supply can either:

A. Come from the wall in a standard wall-fed

B. enter from the floor right into the column for a true free standing result

